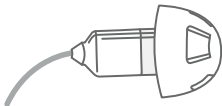
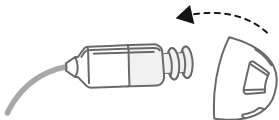


How to change domes

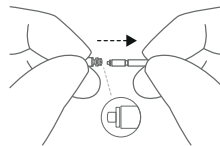
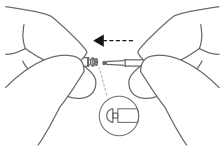
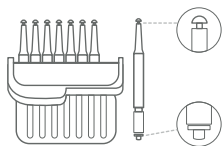
Follow these steps to mount domes. This procedure shows an open dome, but you can follow the exact same procedure if you have a tulip or power dome.

1. Push the new dome over the ribbed flange on the receiver.
2. Make sure that the new dome is properly and securely mounted.
3. To see if the dome is securely mounted, lift the dome as shown and check that both flanges are covered by the dome's collar.



How to change the wax guard

If you wear a dome, remove it before following this procedure. To replace wax guards:

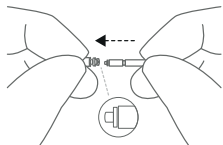


1. Carrying box with eight wax guard tools.
2. Insert the removal tip into the used wax guard until the shaft touches the rim of the wax guard.
3. Slowly pull the wax guard straight out.

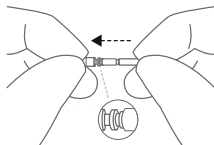


danalogic GN

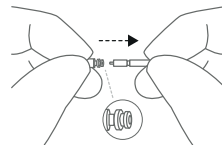
The wax guard tool has two functions: a removal tip to collect the used filter, and a replacement tip with a white filter. To insert the new wax filters, follow these steps:



1. Insert the replacement tip of the tool into the sound outlet.



2. Gently press the replacement tip straight into the sound outlet until the outer ring lies flush with the sound outlet.



3. Pull the tool straight out - the new wax guard will remain in place. Please remember to re-attach dome again, or attach a fresh dome.